



# HAMANA HOMES

## DELIGHTFUL LIVING

### MADE BETTER



**SCTEX**  
11 KM

**HOSPITAL**  
approx. 5km away

**UNIVERSITY**  
approx. 11km away

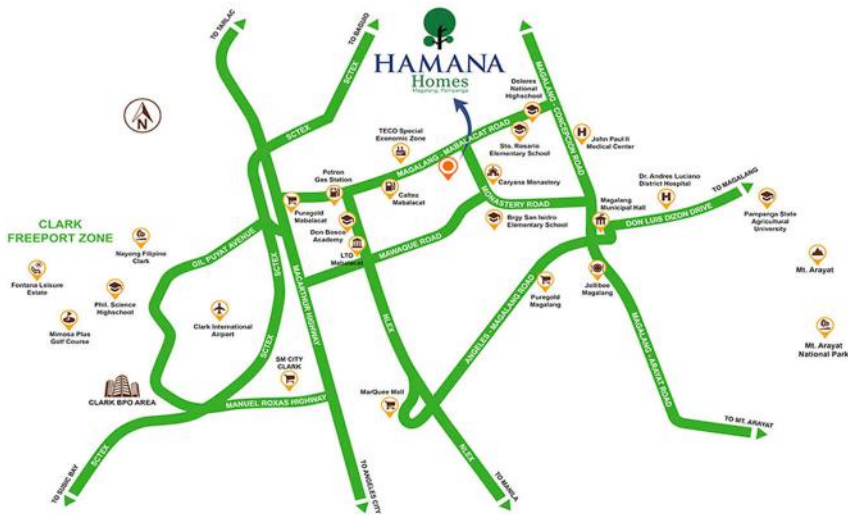
**NLEX**  
5 KM

Mabalacat - Magalang Road

← To CLARK GLOBAL CITY

Actual photos of houses only.  
All other images are artist's illustrations.  
Source of distance: Google Maps

# Making all matters important to you close to home



LEGEND							

## Current Access

NLEX – 5km from Sta. Ines exit | 10 mins.  
 SCTEX – 11km from Dau exit | . 15 mins.  
 Clark Int'l. Airport – 11.9 km | 19 mins.

## Public Transport

Bus Routes  
 Jeepney Routes  
 Tricycle Routes

## Future Access

North-South Commuter Railway  
 Subic-Clark Cargo Railway

Clark Global City 13.2km | approx. 25mins

Clark Freeport Zone 13.4km | approx 25mins.

## Multi-national Companies:

Cathay Pacific  
 FedEx  
 UPS Int'l Inc.  
 Foton Motors Inc.  
 Honda  
 Rolls-Royce  
 Asian Aerospace  
 Texas Instruments  
 Sumidense Automotive  
 Yokohama Tire Phils  
 Sutherland.

## Hotels and Leisure:

Holiday Inn  
 Hilton Clark Sun Valley Resort  
 Clark Marriott Hotel  
 Swissotel Clark  
 Midori Clark Hotel and Casino  
 Royce Hotel and Casino



← TO CLARK GLOBAL CITY

# Making all matters important to you close to home



## Top provincial economic ranking in the country

- 2nd fastest growing economy in the country and higher per capita income than the national average
- 7th most competitive province in the country
- Economy driven by a strong agricultural sector and growing manufacturing and tourism industries.



## Pampanga is a top employer in Central Luzon

- Good business environment
- Ease of doing business
- 28K registered businesses in Pampanga
- Php15.7B worth of investments in the Province
- 50,646 people employed (PSA, 2022)



## Accessible to 2 Main Expressways

- Accessible to leisure and recreation destinations
- Supports business activities between provinces
- More opportunities for family time/bonding, relaxation from work



## North-South Commuter Railway

- Easily accessible to and from NCR and the rest of Luzon.
- With nearest station at NSCR Clark Railway Depot (near SM City Clark) and 6.5km, to Hamana Homes Magalang, Pampanga



## Proximity to Clark Global City (CBD)

- Easy access to education, medical institutions, commercial and retail establishments
- 13.2km away from Clark Global City (CBD)



## Clark International Airport

- Ease of travelling abroad
- 12.7km away from Clark International Airport



TO CLARK GLOBAL CITY

# Hamana Homes Features and Benefits








Hamana Homes is designed with balance between generous green recreational space and essential on-site urban facilities.



## FEATURES

- Generous Open Spaces with Linear Parks, Pocket Gardens and Central Amenities
- Gate & Guardhouses, Project Perimeter Fence
- Twin Spine Roads, Wider and Unobstructed Streets
- Future Retail Development
- Broadband Data/Fiber-ready
- Clean Water Supply System
- Well-planned Drainage and Sewage Treatment System

## BENEFITS

-  Low-density community with more breathing space, fresh air and less pollution
-  Promotes active & healthy lifestyle through shared spaces
-  Exclusive, gated, safe and secured community
-  Easier and better accessibility going in and out of the community
-  Better internet connectivity for remote work, entertainment and leisure
-  Safe and constant water supply
-  Flood resilient community, with clean water discharge

# Amenities

Revitalize, reconnect and recharge with our well-designed constructed community facilities and shared spaces

There's nothing more exciting than having leisure settings dedicated to rest and recreation that are highly accessible from your home.

Revitalize, reconnect and recharge anytime you want with the pampering amenities exclusively available to Hamana homeowners and guests.

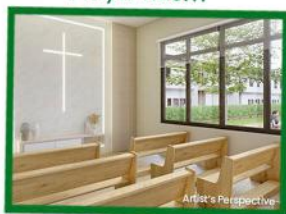
### Linear Parks



### Multi-purpose Court



### Prayer Room



### Swimming Pool



### Gym



### Multi-purpose Hall



Artist's Perspective

\*Artist's Perspective only.  
May vary from actual based on  
final approved plans by the developer

# House Design & Features



## Generous lot sizes

More space for a house garden or parking area with 50sqm to 204 sqm lot sizes

## Generous livable floor areas

More room to move around with 47sqm to 64 sqm floor area as that are expandable

## Large Operable Windows

Natural lighting and air flows with ease given the sufficient Average Window-to-wall Ratio (WWR) of 16% to 26% varying per house model

## Column-Free Design

Maximize every corner of your home for more spacious living

## Expandable House Designs

Housing units are expandable by as much as 20sqm at the ground floor with pre-planned areas for your convenience

## Earthquake Resilient

Your homes will stand the test of time with our innovative "Tibay Buhos" construction technology

## Heat Insulation

Reduces unwanted heat loss or heat gain and reduces energy demand for cooling your home.

## Column-free design

Bigger interior space to accommodate more furniture up to additional (+)2sqm more usable space

## Higher floor to ceiling height

Provides better airflow with Floor to Ceiling Height of 2.9m Floor to Floor Height of 3.2M

## High-quality finishes (porcelain floor tiles, HCG – bathroom fixtures, Hafele – locksets, wooden stair threads)

Durable finishes and less likely need to be replaced in the future

## Ready-to-move-in units

Finished units delivered through a reliable Property Management Office, making your move into your new home a delightful experience.



# LAMEA HOUSE MODEL (Townhouse)

## Lamea Townhouse

For individuals and young families that are planning to live independently, the Lamea Town house is the right home to start making your dreams into a reality with its ample living space.

-  2 Floors
-  3 Bedrooms (End Unit)
-  2 Bedrooms (Inner Unit)
-  Toilet & Bath
-  Living Area
-  Dining Area
-  Kitchen
-  Balcony
-  Carport Provisions
-  Lanai Provisions
-  House Extension Provision



### Unit Specification

Typical Lot Area	75 sqm
Ground Floor	22 sqm
Second Floor	29 sqm

End Unit

Typical Lot Area	50 sqm
Ground Floor	22 sqm
Second Floor	25 sqm

Inner Unit



1 Pocket Garden



2 Ground Floor Plan



3 Second Floor Plan



4 Expansion Plan

### Exterior Finishes

Partition Walls	Plaswall System in Paint Finish
Fire Wall	Plaswall System in Paint Finish
Roofing	Pre-painted Rib-type roof

### Floor Finishes

Living/Dining/Kitchen	with Floor Tiles
Hallways/Bedroom/Balcony	with Floor Tiles
Toilet and Bath/Powder Rm	with Floor Tiles
Stairs	Solid Planks
Porch/Service Area	Rough Cement Finish

### Wall Finishes

Interior Walls	Drywall System in Paint Finish
Exterior Walls	Plaswall System in Paint Finish
Toilet and Bath / Powder Room	Plaswall System with Combination of Paint Finish and Tiles

### Doors and Windows

Entrance Door	Steel Jamb, Panel Door with Lockset
Back Door	Steel Jamb, Panel Door with Lockset
Bedroom Doors	Hollow Core PVC Door with Lockset
Sliding Doors	Analog Frame Sliding Window with Clear Glass
Toilet Doors	Hollow Core PVC Door with Lockset
Sliding Glass Doors	Analog Frame Sliding Window with Clear Glass
Sliding Windows	Analog Frame Sliding Window with Clear Glass

### Features and Accessories

Toilet and Bath / Powder Room	Water Closet, Lavatory, Shower Set, Soap and Tissue Holder
Kitchen	Countertop with Stainless Sink and Faucet

# LAMEA HOUSE MODEL (Townhouse)



## UNIT SPECIFICATIONS

### INNER UNIT



**Stairs**

4.70 sqm



**Kitchen**

3.80 sqm



**2 Bedrooms**

Master Bedroom - 9.00 sqm  
Bedroom 2 - 8.30 sqm



**House Expansion Area**

4.00 sqm



**Living Area**

10.00 sqm



**Balcony**

1.00 sqm



**Porch**

1.50 sqm



**Dining Area**

4.20 sqm



**Carport Provision**

12.50 sqm



**Common T&B**

2.10 sqm

### END UNIT



**Stairs**

4.50 sqm



**Kitchen**

4.00 sqm



**3 Bedrooms**

Master Bedroom - 9.10 sqm  
Bedroom 1 - 6.70 sqm  
Bedroom 2 - 4.80 sqm



**House Expansion Area**

13.50 sqm



**Living Area**

10.00 sqm



**Balcony**

1.10 sqm



**Lanai**

7.50 sqm



**Dining Area**

4.20 sqm



**Carport Provision**

12.50 sqm



**Common T&B**

2.60 sqm



**Porch**

1.50 sqm



# MEANA HOUSE MODEL (Duplex)

## Meana Duplex

With the advantage of being wide and spacious, Meana Duplex offers comfort and convenience for individuals and families that are well underway in achieving their goals in life.

-  2 Floors
-  3 Bedrooms
-  Toilet & Bath
-  Carport Provisions
-  Lanai Provisions
-  Living Area
-  Dining Area
-  Kitchen
-  Balcony
-  House Extension Provision



### Unit Specification

Typical Lot Area	80 sqm	Ground Floor	22.50 sqm
Second Floor	31.5 sqm		

## Exterior Finishes

Perimeter Walls	Plaswall System in Paint Finish
Fire Wall	Plaswall System in Paint Finish
Roofing	Pre-painted Rib-type roof

## Floor Finishes

Living/Dining/Kitchen	with Floor Tiles
Hallways/Bedroom/Balcony	with Floor Tiles
Toilet and Bath/Powder Rm	with Floor Tiles
Stairs	Solid Planks
Porch/Service Area	Rough Cement Finish

## Wall Finishes

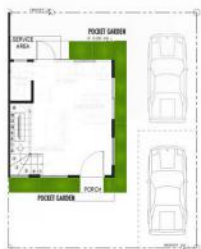
Interior Walls	Drywall System in Paint Finish
Exterior Walls	Plaswall System in Paint Finish
Toilet and Bath / Powder Room	Plaswall System with Combination of Paint Finish and Tiles

## Doors and Windows

Entrance Door	Steel Jamb, Panel Door with Lockset
Back Door	Steel Jamb, Panel Door with Lockset
Bedroom Doors	Hollow Core Panel Door with Lockset
Sliding Doors	Anolok Frame Sliding Door with Clear Glass
Toilet Doors	Hollow Core Panel Door with Lockset
Sliding Glass Door	Anolok Frame Sliding Window with Clear Glass
Sliding Windows	Anolok Frame Sliding Window with Clear Glass

## Features and Accessories

Toilet and Bath / Powder Room	Water Closet, Lavatory, Shower Set, Soap and Tissue Holder
Kitchen	Countertop with Stainless Sink and Faucet



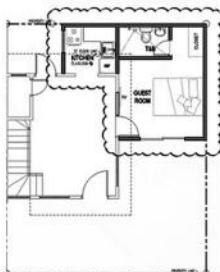
1 Pocket Garden



2 Ground Floor Plan

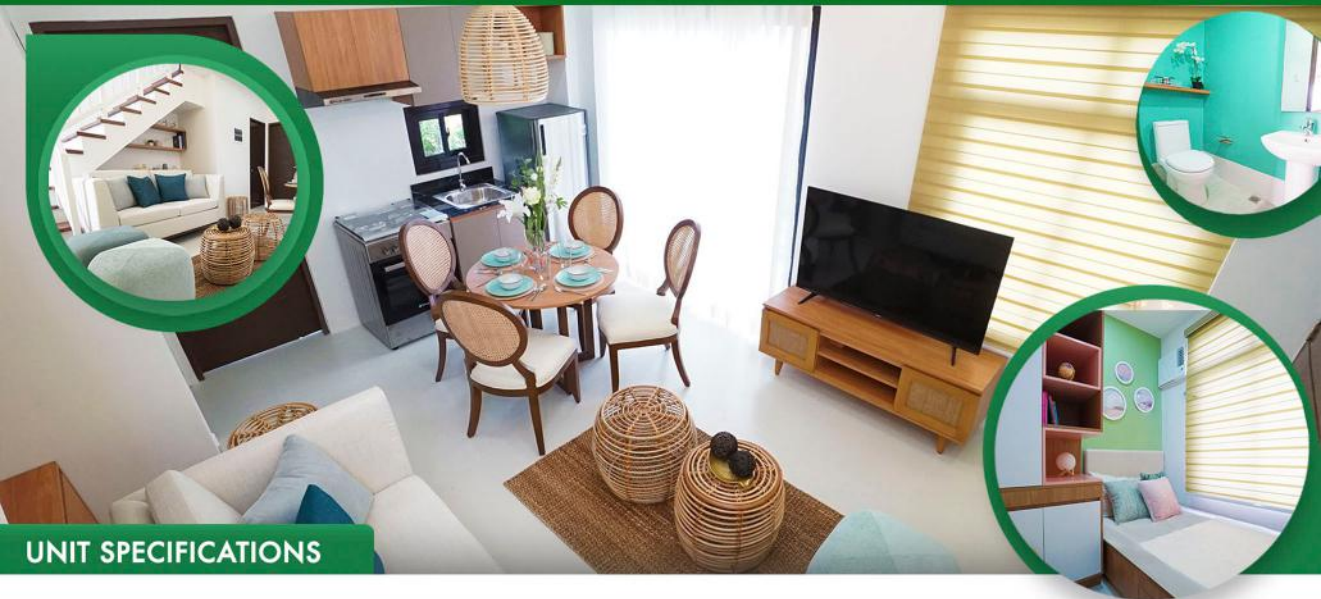


3 Second Floor Plan



4 Expansion Plan

# MEANA HOUSE MODEL (Duplex)



## UNIT SPECIFICATIONS



**Stairs**  
4.80 sqm



**Living Area**  
10.00 sqm



**Dining Area**  
4.40 sqm



**Kitchen**  
5.00 sqm



**Balcony**  
2.90 sqm



**Carport Provision**  
12.50 sqm



**3 Bedrooms**  
Master Bedroom - 9.10 sqm  
Bedroom 2 - 5.40 sqm  
Bedroom 2 - 5.00 sqm



**Common T&B**  
3.00 sqm



**House Expansion Area**  
21 sqm



**Lanai**  
12.50 sqm



**Porch**  
1.50 sqm

# NANEA HOUSE MODEL (Single Attached)

## Nanea Single Attached

Nothing speaks "dream home" quite like living in a Nanea Single Attached. With more spaces and freedom of mobility, this house model is perfect fit for individuals and families that have experienced success far in life.

-  2 Floors
-  3 Bedrooms
-  2 Toilets & Baths
-  Carport Provisions
-  Lanai Provisions
-  Living Area
-  Dining Area
-  Kitchen
-  Balcony
-  House Extension Provision



### Unit Specification

Typical Lot Area	90 sqm	Ground Floor	27.50 sqm
Second Floor	37.00 sqm		

### Exterior Finishes

Perimeter Walls	Plaswall System in Paint Finish
Fire Wall	Plaswall System in Paint Finish
Roofing	Pre-painted Rib-type roof

### Floor Finishes

Living/Dining/Kitchen	with Floor Tiles
Hallways/Bedroom/Balcony	with Floor Tiles
Toilet and Bath/Powder Rm	with Floor Tiles
Stairs	Solid Planks
Porch/Service Area	Rough Cement Finish

### Wall Finishes

Interior Walls	Drywall System in Paint Finish
Exterior Walls	Plaswall System in Paint Finish
Toilet and Bath / Powder Room	Plaswall System with Combination of Paint Finish and Tiles

### Doors and Windows

Entrance Door	Steel Jamba, Panel Door with Lockset
Back Door	Steel Jamba, Panel Door with Lockset
Bedroom Doors	Hollow Core Panel Door with Lockset
Sliding Doors	Analok Frame Sliding Door with Clear Glass
Toilet Doors	Hollow Core Panel Door with Lockset
Sliding Glass Doors	Analok Frame Sliding Window with Clear Glass
Sliding Windows	Analok Frame Sliding Window with Clear Glass

### Features and Accessories

Toilet and Bath / Powder Room	Water Closet, Lavatory, Shower Set, Soap and Tissue Holder
Kitchen	Countertop with Stainless Sink and Faucet



1 Pocket Garden



2 Ground Floor Plan



3 Second Floor Plan

4 Expansion Plan

# NANEA HOUSE MODEL (Single Attached)



## UNIT SPECIFICATIONS



**Stairs**  
4.20 sqm



**Living Area**  
11.30 sqm



**Dining Area**  
5.00 sqm



**Kitchen**  
6.20 sqm



**Balcony**  
2.50 sqm



**Carport Provision**  
12.50 sqm



**3 Bedrooms**  
Master Bedroom - 10.00 sqm  
Bedroom 2 - 6.90 sqm  
Bedroom 3 - 5.50 sqm



**Toilet & Bath**  
Master T&B - 3.50 sqm  
Common T&B - 3.00 sqm



**House Expansion Area**  
21 sqm



**Lanai**  
12.50 sqm



**Porch**  
1.50 sqm